

### Mayors Report



Many residents of the Southern Midlands would have heard over recent weeks, on ABC radio and read in the Mercury as well as the Examiner about the amazing exploits of Council's Archaeologist and Manager of Heritage Projects, Brad Williams, along with his "Time Team" that were uncovering *secrets* from the past at various dig

sites around Oatlands, as part of the Summer Archaeological Program run through Council's Heritage Education & Skills Centre.

Twelve students participated in the program with two additional students running a public program (education, communications and media). Three professional archaeologists (Jen Jones, Angie McGowan and Sylvana Sysdysk) volunteered their time for the three week program. An open day was held on Feb 10<sup>th</sup> which attracted around 500 people, who took guided tours every half-hour. Media interest was gained through ABC Radio (3 interviews and advertising), MidFM (two interviews) and the Mercury as well as the Examiner. Well done Brad and the team!

By contrast with Brad's work of investigating the past with rudimentary tools, the University of Tasmania held an official opening of the Greenhill Observatory at Bisdee Tier on Saturday 23<sup>rd</sup> February. The Greenhill Observatory houses a multi-million dollar telescope capable of searching over a million light years from planet earth, out into the galaxy. The University of Tasmania astronomers are to play a starring role in the international search for Earth-like planets with the commissioning of this new observatory in the Southern Midlands

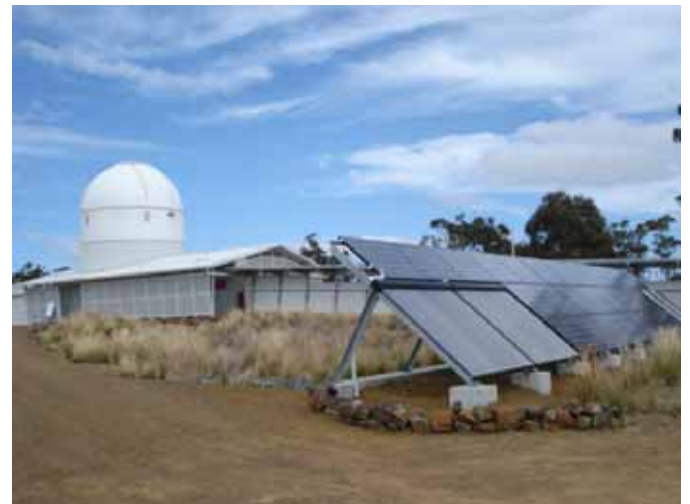
His Excellency the Hon. Peter Underwood AC, Governor of Tasmania officially opened the new UTAS Optical Greenhill Observatory, which is one of the largest ever investments in the Southern Midlands. This \$4.6 million Observatory is an outstanding facility and will enable astronomical studies, not only on a State and National level, but very importantly on an international spectrum as well.

It was my pleasure to attend the official opening, together with a large number of professionals, which included astrophysical practitioners from the UK, France, Brazil the USA and a representative from NASA.

This world class resource will contribute to astronomical

studies on a world-wide basis and be a learning facility for students from all over Australia.

The Southern Midlands Council is very proud to have such a UTAS facility located here in the Southern Midlands. We are also gratified by the fact that Council officers have worked very closely with the UTAS team to bring this project to fruition, and we welcome the UTAS School of Mathematics and Physics to our southern midlands community.



### Kempton Festival

The Kempton Festival was held on Sunday 17<sup>th</sup> February and again, attracted a large number of visitors to the township. His Excellency Hon. Peter Underwood AC, Governor of Tasmania officially opened the event and spent a considerable time meeting and chatting with those present.





If you would like to share your photo's of place or events in Southern Midlands please forward your photo to the editor [lcartledge@southernmidlands.tas.gov.au](mailto:lcartledge@southernmidlands.tas.gov.au) This photo was taken by Denise Smith, Lake Dulverton Oatlands Tasmania 2013.

The organising committee added a number of new features to this year's program, which included a unique sheep race competition. This drew a large audience and many laughs. The winning sheep was "Chainsaw" proudly sponsored by Claremont Chainsaw & Mowers and I wish to acknowledge Mark & Kelly Woodward (from Claremont Chainsaw & Mowers) who kindly donated the prize money back to the fire appeal.

The 3<sup>rd</sup> Light Horse Regiment put on a great horsemanship display in full uniform, which would have been uncomfortable in the extremely hot weather conditions.



On behalf of Council and the community, we once again congratulate the Green Ponds Progress Association and the Kempton Festival Committee for their hard work and commitment in organising this event.

In talking with members of the community, there are some concerns about the considerable amount of media commentary regarding the need to reduce 'red' and 'green' tape which is viewed as stifling and frustrating economic development in Tasmania. Local Councils are implicated in this commentary.

It is important to note that local Councils are established under State Government legislation, and the majority of its practices are governed or regulated by State legislation. Councils must adhere to the processes and requirements required within the various statutes, which can often be viewed as onerous and constricting.

Examples of relevant legislation relate to waste and environmental management; building and plumbing control; dog control; food safety; public health; and land use planning.

In relation to land use planning and approvals, this is one area whereby local Councils still have considerable input through the development of local Planning Schemes, however even this is changing with proposed new Planning Schemes having a large component of commonality across the State, and within the respective regions. Local issues, such as Heritage precincts and other special zones will however continue to be addressed on a local basis with local input.

The important point I wish to make here is that although Council is often bound by state and or federal legislation, Council is also here to help you understand and work with this legislation and regulation.

With forthcoming elections at both the Federal and State level, and with politicians seeking your support, it is a timely opportunity to voice your concerns about legislative change. A commitment should be sought to not only stop passing legislation which convolutes our lives even further, but seek an undertaking to reduce the level of compliance (and costs associated therewith) which does impact on the potential for future economic development in Tasmania.

Mayor Tony Bisdee OAM

## Spanish heath – may look beautiful but it is a bad weed!!

Spanish heath (*Erica lusitanica*) is a weed that continues to be an issue for landholders in the wider Levendale area.

Spanish heath is a woody shrub that usually grows to between 0.5-2 metres tall. It has bright green, feathery leaves, and produces masses of bell-shaped pinkish-white flowers over winter and spring. The flowers are usually up to 3cm long, and produce thousands of tiny seeds in spring and summer.

Spanish heath is often mistaken for a native plant. If you are not sure whether a plant is a friend or foe, run your fingers through its foliage. Spanish heath can be easily distinguished from native heaths by its soft, bright green, feathery leaves – native heaths have sharper, more substantial leaves and are often a darker green with parallel veins on the underside of the leaf.

If you are not sure about a plant then please contact me and I can arrange for it to be identified. Unless landholders are aware of Spanish heath and take steps to control it then it will become a persistent and costly problem. At this stage there is no government funding to assist landholders.

More information, photos and control methods are available on the DPIPWE web site – type in 'Spanish heath' into your search engine eg Google to locate.

The Southern Midlands Council also has information brochures available at the Council offices in Oatlands and Kempton. I can be contacted on 6254 5048 (Monday or Tuesday) or mobile 0417 599 816 for further assistance.

Helen Geard  
Southern Midlands Council – Landcare Office



### Central Hawks

During the off season the club has seen some hard work by a few volunteers to get the Kempton clubrooms extension and renovations finished. Thank you!

Memorabilia from Kempton and the Central Hawks is in the process of being hung back up and with a fresh coat of paint outside the grand old stand is looking pretty good again.

On the field the players are training Tuesday & Thursday from 6.15 at Kempton and the roster is due to kick off the first week in April, with home games at Oatlands and Kempton.

All old & new players are most welcome to come along and for more information call the President Mr. Ben White Mobile 0408 051 853.

Follow us on [facebook](#)

### Hawks Junior's News!

The Junior Club is also taking registrations for age groups from U/8 through to U/12

#### Training

Wednesday nights starting at 5.30pm alternating between Kempton and Oatlands.

**Under 11 and Under 12's** will start training  
Wednesday 6<sup>th</sup> March at Oatlands 5.30pm

**Under 8 – 10's** will start on  
Wednesday 13<sup>th</sup> March at Kempton 5.30pm

#### Coaches

Under 12's VACANT – EXPRESSIONS OF INTEREST NEEDED URGENTLY  
Under 11's Daniel Davis 0407941804  
Under 10's Andrew Dean 0418143577  
Under 8's Stephen Byers 0419026878

#### Season Commences

The first game will be on Sunday 7<sup>th</sup> April 2013

#### Junior Committee

As our Junior Club is rapidly growing we need more people to join us on the Committee. We will be having our next Committee meeting in the next couple of weeks and would really like to have more people join us this season. Everyone is welcome!



#### First Aid

We are required to supply a first-aid person for each of our teams for home and away games. If you have a current first aid certificate and would like to help us out could you please let us know.

We are all looking forward to a very busy and fun filled year with the Central Hawks and with 4 teams this season it is a great effort for our Community.

If you have any queries regarding anything please contact the following:

Rachael Barwick 0417596261 or 62541353  
Gabrielle Watkins 0419385010  
Rachel Davis 0409847860 or 62547204  
Penny Scott 62547209

## Southern Midlands Council Arts Advisory Committee



### The Southern Midlands Council Arts Advisory Committee is seeking expressions of interest.

Council recently adopted the Southern Midlands Arts Strategy which was a document that was developed by Council and its Arts Strategy Working Group, through extensive Community consultation. This document sets out both Council and Community expectations in the arts space over the next five years. The Southern Midlands boasts a rich fabric of creative endeavour throughout our local government area in public art such as Folko Kooper's "shadows of the past" along the Heritage Highway, and through the written word by Levendale's international bestselling author Rachael Treasure, to name but a couple. This strategy document will provide an opportunity for other creative members of our Community to engage and expand their passion for the arts and maybe follow Folko and Rachael's success in their chosen field. Council are really pleased to be part of this exciting journey of discovery. The Arts Strategy and its foundation document the Creative Communities Report are both available on Council's web site, visit us at [www.southernmidlands.tas.gov.au](http://www.southernmidlands.tas.gov.au)

If your interest in "the arts" includes, but is not limited to, music (instrumental and vocal), dance, drama, folk art, creative writing, architecture and allied fields, painting, sculpture, photography, graphic and craft arts, industrial design, blacksmithing, costume and fashion design, motion pictures, television, radio, tape and sound recording, the arts related to the presentation, performance, execution and exhibition of such major art forms, and the study and application of the arts to the human environment. – In short all forms of creative Endeavor, please contact us to become involved in the program.

The aim of the Southern Midlands Council Arts Advisory Committee (SMCAAC) is to provide advice to Council in respect to the arts, which includes.

- Implementation of the Southern Midlands Arts Strategy;
- Building appreciation and understanding of the arts;
- Identifying and building the capacity of Arts;
- Improving advocacy, influencing policy and identifying strategic priorities for the arts;
- Recognising, celebrating and promoting the uniqueness of our region through the arts; and
- Considering and reporting on any other matters which may be referred to it by Council.

Community representatives for the SMC Arts Advisory Committee will be selected on the basis of the following criteria:

- Experience in arts policy development, planning and program delivery;
- Demonstrated leadership in strategically positioning arts in local government;
- Capacity to engage others in achieving shared goals and priorities for arts development;
- Experience in measuring outcomes and success; and
- Specific areas of expertise to contribute to the Committee.

Visit our web site [www.southernmidlands.tas.gov.au](http://www.southernmidlands.tas.gov.au) under "Latest News" to find out more, or contact Andrew Benson, Manager Community & Corporate Development at on 6259 3001 or [mail@southernmidlands.tas.gov.au](mailto:mail@southernmidlands.tas.gov.au)

The Creative Communities Report and the SM Arts Strategy, along with the Terms of Reference for the SMC Arts Advisory Committee, are all on the website, and will provide further information to assist candidates in understanding both Council's direction and the Community expectation which has been galvanized through an extensive Community consultation process details of which is contained in the Creative Communities Report.

### **Whilst we are talking about the arts let us know if**

You have an arts interest (refer to the definition of Arts above) ? If yes, in which area of the arts?

- You are already a member of an arts group?
- You are already a member of an arts group, please provide details.

Contact Andrew Benson [mail@southernmidlands.tas.gov.au](mailto:mail@southernmidlands.tas.gov.au) or 6259 3001, or call in to the Kempton office if you would like your information registered on Council's Arts Database.

## Court House Capers - *Presents*

### Women Of Conviction!

#### *Come and See!*

## Mary, Mary, Quiet, Contrary....

Mary tells the story of her short and poignant life, as an assigned convict servant

What Was Eliza Lacking?

Eliza tells her story, a tale with a twist, and true! based

@ Oatlands Goal, Mason Street  
& Supreme Court House  
Corner Campbell and  
The Esplanade

## For the Tasmanian Heritage Festival

### Every Sunday in May

5, 12, 19, 26 May 2013

'Mary' @ Oatlands Goal at 11.00 am, 11.15 am and  
11.30am

'Eliza' @ Oatlands Supreme Court @ 1.00 pm 1.15pm  
and 1.30 pm



### BOOKINGS, INFORMATION & TICKETS

Callington Mill & Visitor Centre, Mill Lane, Oatlands  
T: 03 6254 1212

E: [tourism@southernmidlands.tas.gov.au](mailto:tourism@southernmidlands.tas.gov.au)

Bookings recommended Tickets \$5.50  
Includes both Performances



### Bushland protection in the Southern Midlands

Southern Midlands Council, through its Landcare Unit, has been working actively with landowners in the municipal area over the last eight years to protect and preserve important native vegetation communities and threatened species through voluntary agreements such as conservation covenants. Landholders have been provided with monetary and other incentives, such as fencing materials, in exchange for actively managing important natural assets for agreed lengths of time (up to 100 years) under conservation agreements. Natural assets protected include: rare vegetation communities such as silver peppermint bush, native grassland, or threatened species habitat such as wedge tailed eagle nesting sites. In this type of practical conservation, farmers have been resourced to: control invasive weeds, fence off identified important areas, manage fuel reduction and manage stock access. Stock are used as a management tool in some conservation covenants, for example, on infrequent rotations, in low numbers and at the right time of the year, stock help to maintain the open structure of the bush without impacting the natural values.

The Southern Midlands municipal area currently has over 10,000 hectares under voluntary conservation agreements, 3,500 hectares of which were negotiated through programs managed by Southern Midlands Council, for example, the Midlands Biodiversity Hotspot Project (2005-2008).

Southern Midlands Council is currently managing a new Project, *BushLinks500*, with funds from the Australian Government's Clean Energy Future Biodiversity Fund Program. This Project is funding landholders in identified priority areas of the landscape to:

- protect identified areas of natural vegetation through fencing, weed control, grazing management and some replanting; and
- establish bands of vegetation between the protected areas using an innovative new landscape restoration technique.

More information about this project is available on Council's web site: [www.southernmidlands.tas.gov.au](http://www.southernmidlands.tas.gov.au)



Rural Alive & Well Inc. (RAW) would like to welcome Darren Thurlow to the RAW team. Darren has been appointed as Rural Outreach Worker in the Southern Midlands replacing Leonard Willsher who recently retired.

Darren has experience working in the field of Drug & Alcohol, & Therapeutic Care and has previously worked with families & young men suffering from Mental Health & Anger Issues. Darren can be contacted on 0428 333 517 or through the RAW office 6259 3014.

**Rural Alive & Well Inc. has also received recognition for its invaluable contribution in the following awards:**

Australia Day award 2012 Sustainable Communities award.

Winner of the 2011 -Tasmanian Rural Health Week Group Award 2011"

"Certificate of Commendation – Red Herring Surf Social Inclusion Award 2009"

Winner Tasmanian LIFE Award – AAMI Healthy Communities Award 2008"



### Council Meetings 2013

| Date                      | Venue                     |
|---------------------------|---------------------------|
| Wednesday 27th March 2013 | Tunbridge Hall            |
| Wednesday 24th April 2013 | Levendale Hall            |
| Wednesday 22nd May 2013   | Oatlands Council Chambers |
| Wednesday 26th June 2013  | Kempton Council Chambers  |
| Wednesday 17th July 2013  | Oatlands Council Chambers |



### Heritage Highway Visitor Centre & Callington Mill

1 Mill Lane, Oatlands Tas 7120  
 Phone: 03 6254 1212 Fax: 03 6254 1467  
 Email: [tourism@southernmidlands.tas.gov.au](mailto:tourism@southernmidlands.tas.gov.au)

**Opened 9am to 5pm Daily**  
 (Closed Xmas Day & Good Friday)

Our team are on hand to assist you with local and state-wide travel information, maps, local accommodation bookings, tours through the fascinating Callington Mill, and the surrounding historic buildings plus general enquiries.

Located within the Visitor Centre is our gift shop and Mill keepers Café.

The gift shop offers a wide range of gifts, crafts and of course, our popular unique Callington Mill stoneground local and organic flours.

After a tour of the Mill, indulge yourself with delicious snacks made with the Callington Mill Flour accompanied by a hot or cold drinks.

## How to contact us!

### Council Head Office Oatlands

71 High Street, Oatlands Tas 7120  
 All mail should be addressed to The General Manager  
 PO Box 21, Oatlands Tas 7120  
[www.southernmidlands.tas.gov.au](http://www.southernmidlands.tas.gov.au)  
 Facsimile 03 6254 5014  
[mail@southernmidlands.tas.gov.au](mailto:mail@southernmidlands.tas.gov.au)  
 Monday-Friday 9.00 am to 4.30 pm

### 03 6254 5000

Corporate Services 03 6254 5000  
 ie rates, administration  
 Landcare Unit 03 6254 5046  
 Works Dept. 03 6254 5008

Development & Environmental Services Office 03 6259 3011  
 85 Main Street, Kempton Tas 7030  
 Facsimile 03 6259 1327  
[mail@southernmidlands.tas.gov.au](mailto:mail@southernmidlands.tas.gov.au)  
 Monday-Friday 9.00 am to 4.30 pm

Planning, Building, Health, Animal Control, Community & Corporate Development 03 6259 3011

### Tourism & Recreation Facilities

Heritage Highway Visitor Centre Callington Mill,  
 1 Mill Lane, Oatlands 03 6254 1212

Oatlands Swimming Pool, Campbell Street, Oatlands 03 6254 5024

Chauncy Vale Wildlife Sanctuary 350 Chauncy Vale Road, Bagdad 03 6268 6365

After Hours Emergency Service 0419 325 405

### Elected Members:

Mayor Tony Bisdee O.A.M.  
**Ph: 6259 1128**  
 Fax: 6259 1418  
 Mobile: 0418 355158  
 Email: [tonybisdee@bigpond.au](mailto:tonybisdee@bigpond.au)

Deputy Mayor Mark Jones O.A.M.  
 Ph: 6254 0074  
 Fax: 6254 0074  
 Mobile: 0408 298 347

Clr Tony Bantick  
 Ph: 62686277  
 Fax 62681211  
 Mobile 0419 340157  
 Email [tony@4one4.com.au](mailto:tony@4one4.com.au)

Clr Colin Beven  
 Ph: 6260 4157  
 Fax: 6260 4167

Clr Bob Campbell  
 Ph: 6255 5232  
 Fax: 6255 5232  
 Mobile: 0404 260026

Clr Marie Connors  
 Ph: 6259 3095  
 Fax:  
 Mobile: 0438 686665  
 Email: [lamenlazy@netbay.com.au](mailto:lamenlazy@netbay.com.au)

Clr Don Fish  
 Ph: 6255 5157  
 Fax: 6255 5257

Clr Alex Green  
 Ph: 6260 4153  
 Fax 6260 4036  
 Mobile: 0429 604153  
 Email: [aogreen@bigpond.com](mailto:aogreen@bigpond.com)

Clr John Jones O.A.M.  
 Ph: 62591223  
 Fax 6259 1223  
 Mobile: 0418 121163  
 Email: [jones.ent1@bigpond.com](mailto:jones.ent1@bigpond.com)

## HOUSEHOLD WASTE TRANSFER STATIONS OPERATING HOURS Southern Midlands Council

| OATLANDS<br>Tunnack Main Road      | DYSART<br>Huntingdon Tier Road            | CAMPANIA<br>Brown Mountain Road    |
|------------------------------------|---|------------------------------------|
| <b>Tuesday</b> 1.00 pm to 5.00 pm  | <b>Tuesday</b> 1.00 pm to 5.00 pm         | <b>Tuesday</b> 1.00 pm to 5.00 pm  |
| <b>Friday</b> 11.00 am to 3.00 pm  |   | <b>Thursday</b> 1.00pm to 5.00 pm  |
| <b>Saturday</b> 8.00 am to 12 noon | <b>Saturday</b> 12 noon to 5.00 pm        | <b>Saturday</b> 8.00 am to 12 noon |
| <b>Sunday</b> 1.00 pm to 5.00 pm   | <b>Sunday</b> 10.00 am to 5.00 pm         | <b>Sunday</b> 1.00 pm to 5.00 pm   |
| <b>Closed</b><br>Mon, Wed & Thurs  | <b>Closed</b><br>Mon, Wed, Thurs & Friday | <b>Closed</b><br>Mon, Wed & Friday |